

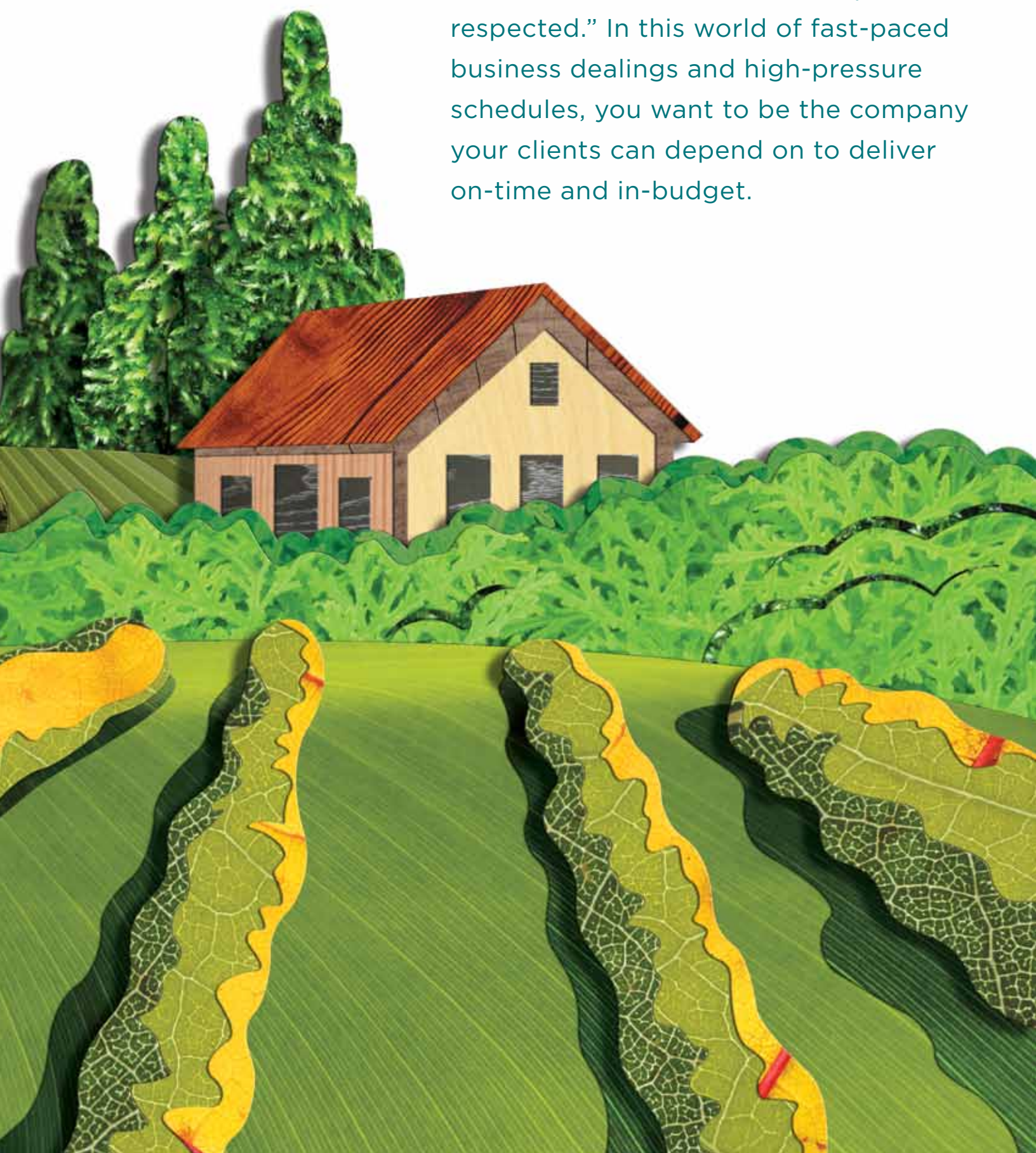
# SONOMA

# SONOMA



West Linn Paper Company  
4800 Mill Street • West Linn, OR 97068  
1.800.989.3608  
[www.westlinpaper.com](http://www.westlinpaper.com)

**Printed On 100# Sonoma Gloss**  
Please pass along or recycle this piece



When your clients think of you, you want them to think “reliable, reputable, respected.” In this world of fast-paced business dealings and high-pressure schedules, you want to be the company your clients can depend on to deliver on-time and in-budget.

# RELIABLY SONOMA

**Our customers feel the same way about our paper. Sonoma® has been a competitive #3 coated freesheet in the market for more than 30 years—an industry standard. Sonoma is the respected choice because of its quality, runnability, versatility and solid performance time and again.**

Sonoma has always helped you be the business you want to be. The quality and reliability of our paper is passed on to your customers in every product you create. And today, Sonoma is even better than ever. Just look at the improvements we have made to offer the paper you need day after day.

- Sonoma grades are now available with the option of FSC or SFI certification and come with West Linn Paper Company’s chain-of-custody assurance. You know that you are getting a reliable paper that comes from documented sustainable sources.
- Inventory of stocking sizes are available in multiple locations across the U.S., making Sonoma a key player in just-in-time orders.
- More standardized grades are available due to more flexibility at the mill on three machines and a higher frequency of runs. Most Sonoma grades are available with no minimum or trim requirements. The bottom line is that Sonoma is ready when you are.
- At West Linn Paper Company, it is really about the people behind the paper. We rely on great cooperation between technical, operations, sales and customer service to do everything possible to get you the paper you want, when you want it.

At West Linn Paper Company, we make sure that our employees understand customer requirements and are focused on achieving target properties on each and every roll of paper that comes off the paper machine. Our aim is making a paper that always meets customer, printer and end user expectations—day in and day out.

This smooth, blue-white sheet continues to be the go-to competitively priced paper for catalogs, direct mail, corporate brochures, high-run publications and

advertisements. Solid performance combined with excellent customer support and availability have backed Sonoma for over three decades.

We are invested in making your products stand out in the crowd.

#### **Sonoma is perfect for:**

- Catalogs
- Direct Mail
- Corporate Brochures
- High-run Publications
- Advertisements

#### **Sonoma is all this and more:**

- Extremely versatile and available in 45# text through 80# cover in gloss, dull and matte finishes
- A reliable performer with a smooth surface
- A blue-white sheet with 86-88 brightness
- Available in text, cover and caliper grades
- Available with the option of FSC or SFI certification

#### **West Linn Paper Company**

As a small, independent mill located at the base of the historic Willamette Falls near Portland, Oregon, we offer the customer service and attention to detail that is often overlooked with larger mills. By remaining flexible in our manufacturing, we deliver what our customers need—quality paper and fast, on-time delivery. Each knowledgeable sales, technical support and customer service representative provides the personalized service and attention to detail that make doing business with us easy. For more information on West Linn Paper’s products or services, please contact customer service at 1-800-989-3608 or visit our website at [www.westlinnpaper.com](http://www.westlinnpaper.com).